

1,1-Difluoro-5-phenylpenta-1,2-diene, ¹⁹F NMR

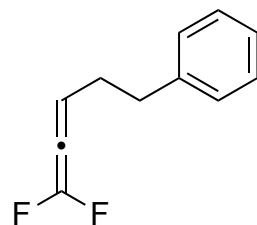


Current Data Parameters
NAME SS2-OS1
EXPNO 20
PROCNO 1

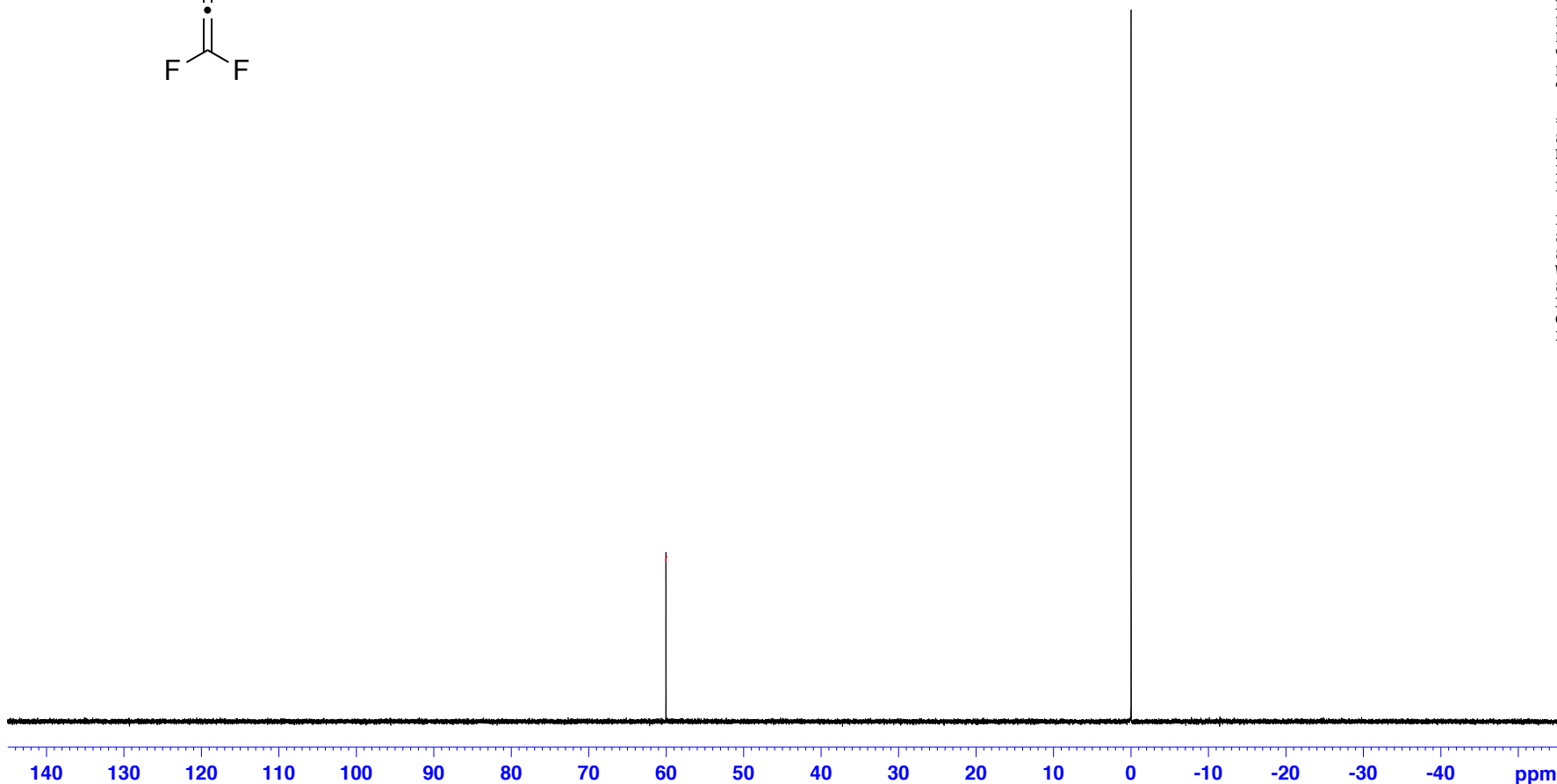
F2 - Acquisition Parameters
Date_ 20160615
Time_ 13.02
INSTRUM spect
PROBHD 5 mm CPPBBO BB
PULPROG zgfglqn
TD 131072
SOLVENT CDCl3
NS 16
DS 4
SWH 133928.578 Hz
FIDRES 1.021794 Hz
AQ 0.4893355 sec
RG 175.56
DW 3.733 usec
DE 18.00 usec
TE 300.0 K
D1 1.00000000 sec
TD0 1

==== CHANNEL f1 =====
SF01 564.6299196 MHz
NUC1 19F
P1 15.00 usec
PLW1 15.50000000 W

F2 - Processing parameters
SI 65536
SF 564.5947769 MHz
WDW EM
SSB 0
LB 0.30 Hz
GB 0
PC 1.00



60.0311
60.0238



2.000